

erflexion

visualising spaces

...imagine all the people... restaurant bar imagine Sihlcity Zurich

reflexion ag

hardturmstrasse 123
8005 zurich switzerland

phone +41 44 355 51 11
fax +41 44 355 51 10

mail@reflexion.ch
www.reflexion.ch



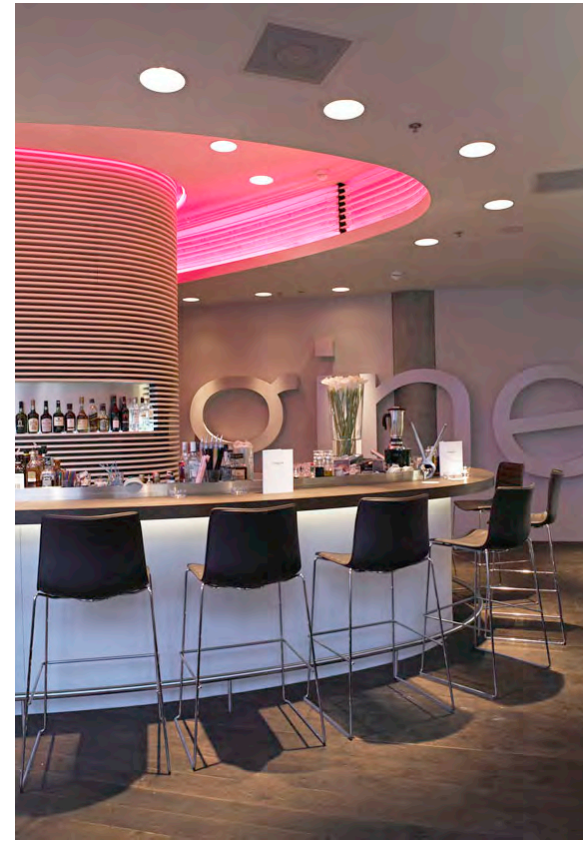
The design of the new «Imagine» corresponds to the timely Sihlcity-modern architecture of the building complex and reflects his Bargestaltung the elliptical skylight of the mall is an element that has been the same since 2002 and also pass the test taken by Candrian Catering betieben werden - «Imagine» in Zurich Hauptbahnhof.

The lighting supports the intention of interior design: high illuminance improve Auswirkung here during the day. In the evening the room has a cozier mood lighting. The counter lighting is made by multiple, stacked, viewable, curved white fluorescent alternated with magenta. Light takes the Gestaltung of the oval center block with horizontal slats.

Client:
Candrian Catering AG
Architektur:
P.5 Zurich
Opening:
March 2007
Scope of Work:
General light planning
Project focus:
Restaurant and bar



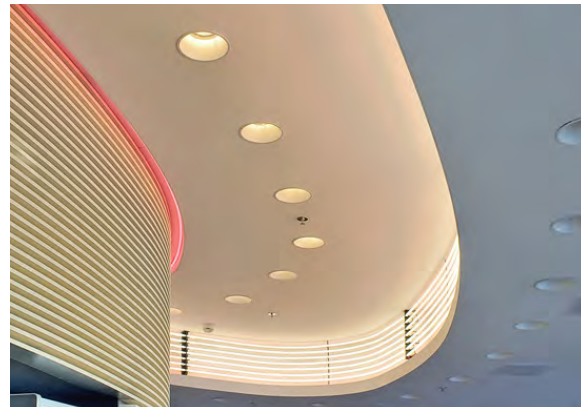
1



4



2



3



5

1 - 5 Restaurant trough day- (1, 3, 5) and nighttime (2, 4)