

swatch art peace hotel shanghai

reflexion ag

hardturmstrasse 123
8005 zurich switzerland

phone +41 44 355 51 11
fax +41 44 355 51 10

mail@reflexion.ch
www.reflexion.ch



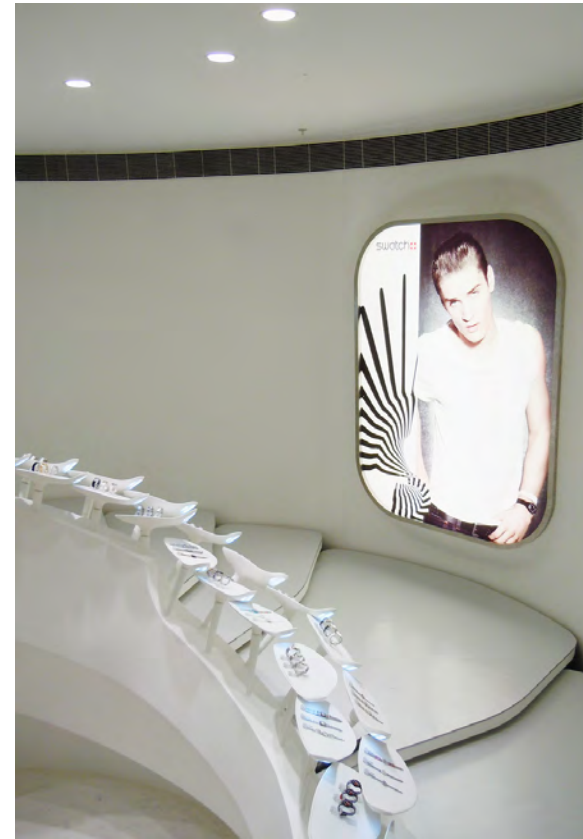
The mix of several programmes in one house and in some areas even different users in the same room automatically generates a large variety of different architectural designs. This architectural variety is also increased by the coexistence of heritageprotected and contemporarily refurbished rooms in the same building. To avoid that the resulting design mixture becomes overcrowded, the lighting strategy in most parts of the Swatch Art Peace Hotel is to integrate the lighting in the given structures as unobtrusively as possible.

Lighting is understood as a means to clarify and to structure the spaces without attracting attention to the source of light itself, and not as an extra layer of independent design elements.

Client:
Shanghai Swatch Art Centre Co., Ltd.
Architectur:
Agence Jouin Manku, Paris
Completion:
May 2010
Scope of Work:
General light planning
Project focus:
Hotel and retail lighting



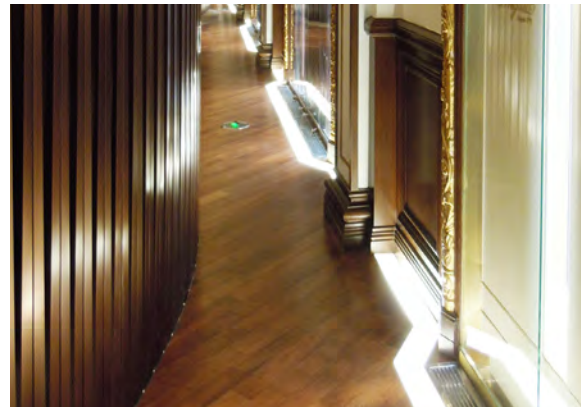
1



4



2



3



5

Picture frontpage
Swatch Shop

1 Detail Swatch Shop

2 Omega Shop

3 Entry Level

4 Staircase Swatch Shop

5 Facade lighting